

J E T

MBS-708CS Metal Working Bandsaw

**50000331T
400/50/1**

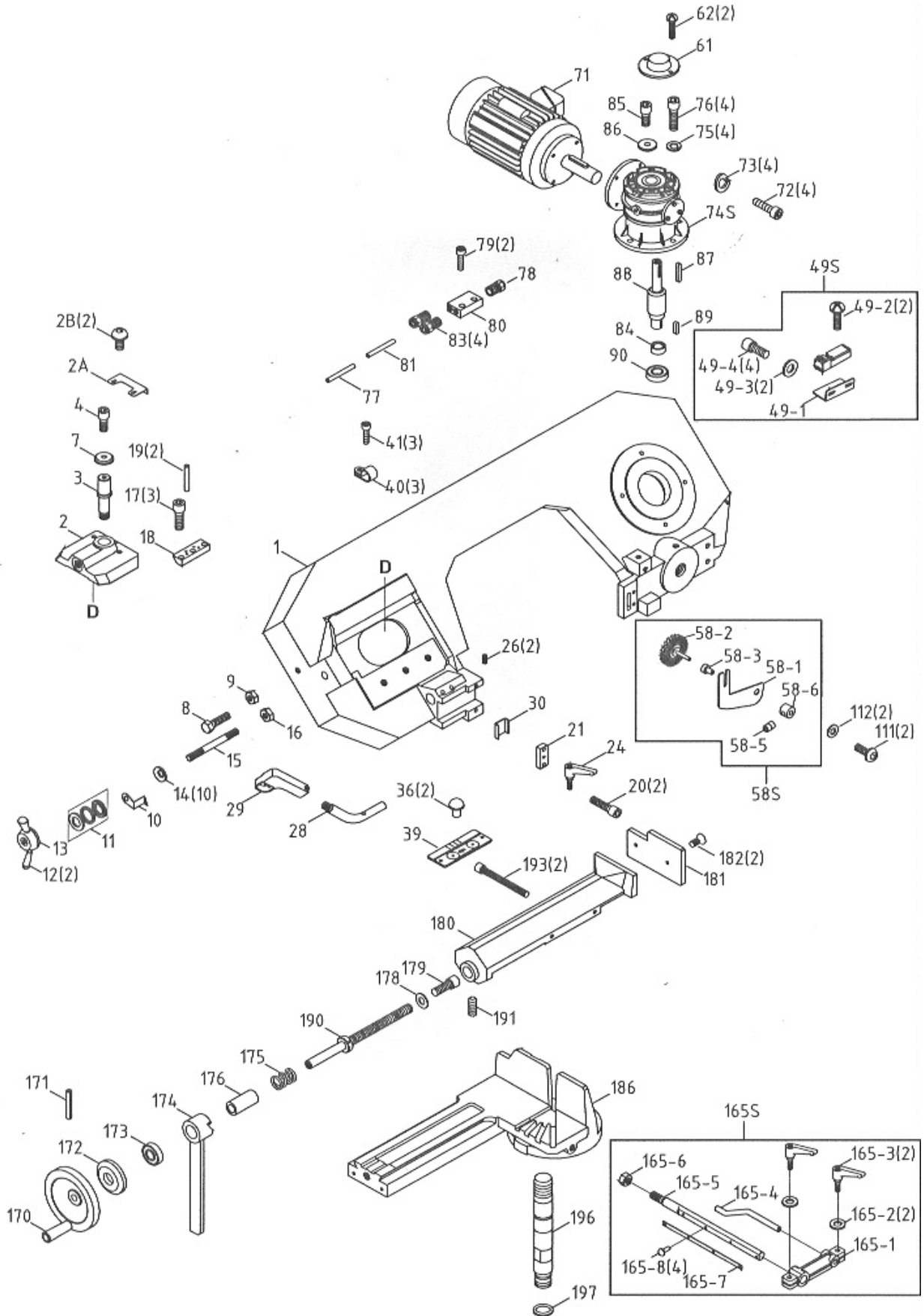
**PARTS LIST
ERSATZTEILLISTE
LISTE DE PIECES**

WMH Tool Group AG
Bahnstrasse 24, CH – 8603 Schwerzenbach
www.wmhtoolgroup.ch; info@wmhtoolgroup.ch
Tel +41 (0) 44 806 47 48
Fax +41 (0) 44 806 47 58

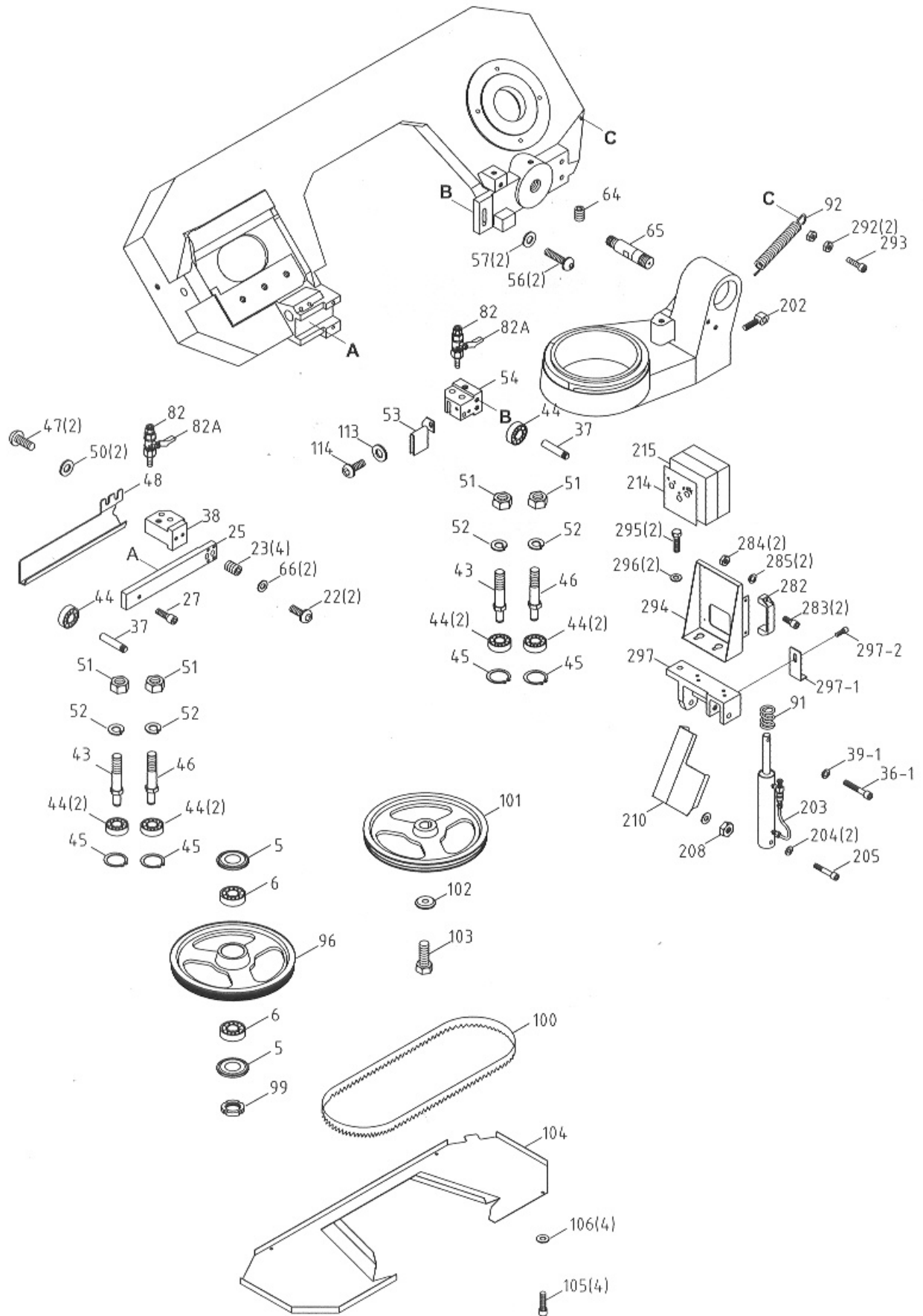
P-500003331T 06/05



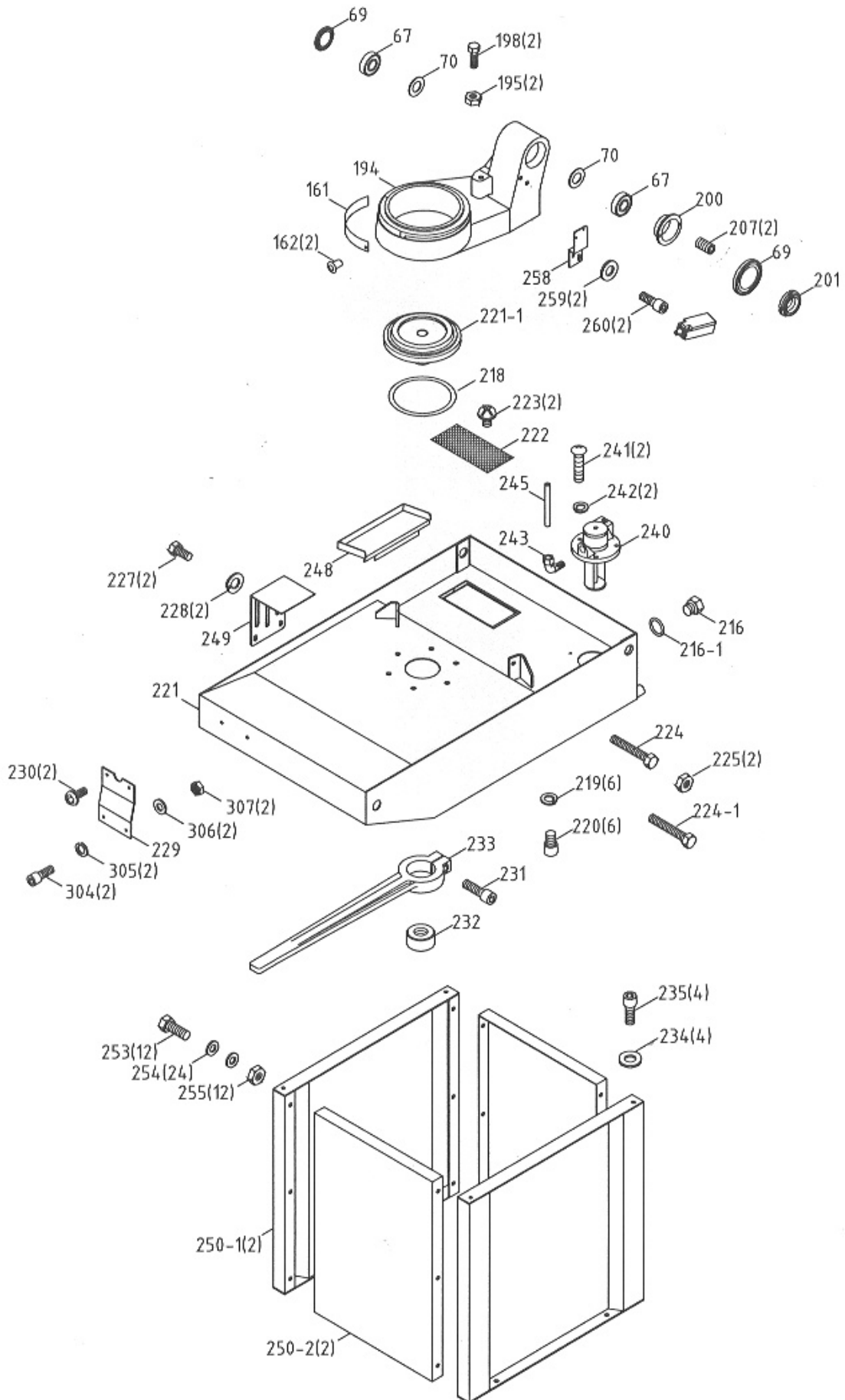
Breakdown for the MBS708CS Transmission Assembly



Breakdown for the MBS708CS Transmission Assembly



Breakdown for the MBS708CS Transmission Assembly



**Parts List for the MBS708CS
Transmission Assembly**

Index No.	Part No.	Description	Size	Qty.
1	MBS708CS-001	Body Frame		1
2	MBS708CS-02	Anchor Block		1
2A	MBS708CS-02A	Anchor Plate		1
2B	MBS708CS-02B	Round Head Screw	M5X10L	2
3	MBS708CS-03	Shaft		1
4	MBS708CS-04	Hex. Socket Head Screw	M8X20L	1
5	MBS708CS-05	Anti-Chip Cover		2
6	MBS708CS-06	Tapered Bearing		2
7	MBS708CS-07	Washer		1
8	MBS708CS-08	Hex. Head Screw	M8X45L	1
9	MBS708CS-09	Hex. Nut	M8	1
10	MBS708CS-10	Tension Indication Plate		1
11	MBS708CS-11	Bearing		1
12	MBS708CS-12	Knob		2
13	MBS708CS-13	Blade Tension Handle		1
14	MBS708CS-14	Spring Washer	øID16.3Xø31.5X1.8t	10
15	MBS708CS-15	Lead Screw		1
16	MBS708CS-16	Hex. Nut	M16XP2.0	1
17	MBS708CS-17	Hex. Socket Head Screw	M8X25L	3
18	MBS708CS-18	Fixed Block		1
19	MBS708CS-19	Pin	ø 5X40	2
20	MBS708CS-20	Hex. Socket Head Screw	M6X20L	2
21	MBS708CS-21	Fixed Block		1
22	MBS708CS-22	Round Head Screw	M8X25L	2
23	MBS708CS-23	Hex. Socket Headless Screw	M6X15L	4
24	MBS708CS-24	Grip	M8X30L	1
25	MBS708CS-25	Blade adjust stick		1
26	MBS708CS-26	Hex. Socket Headless Screw	M8X10L	2
27	MBS708CS-27	Hex. Socket Head Screw	M6X10L	1
28	MBS708CS-28	Connecting Tube		1
29	MBS708CS-29	Handle		1
30	MBS708CS-30	Fixed Plate		1
36	MBS708CS-36	Rivet	ø 2X6	2
36-1	MBS708CS-36-1	Hex. Socket Head Screw	M10X60L	1
37	MBS708CS-37	Bearing Shaft		2
38	MBS708CS-38	Blade Adjust (Front)		1
39-1	MBS708CS-39-1	Spring Washer	M10	1
39	MBS708CS-39	Scale		1
40	MBS708CS-40	Hose Clip	ø8	3
41	MBS708CS-41	Hex. Socket Head Screw	M8X15L	3
43	MBS708CS-43	Eccentric Guide		2
44	MBS708CS-44	Bearing		10
45	MBS708CS-45	C-Retainer Ring	ø8	4
46	MBS708CS-46	Eccentric Guide		2
47	MBS708CS-47	Round Head Screw	M5X12L	2
48	MBS708CS-48	Blade Cover (Front)		1
49	MBS708CS-49	Power Cutting Bracket		1
49-1	MBS708CS-49-1	Power Cutting Bracket		1
49-2	MBS708CS-49-2	Hex. Socket Head Screw	M3X30L	2
49-3	TS-1550041	Washer	M6	2
49-4	MBS708CS-49-4	Hex. Socket Head Screw	M6X12L	2

**Parts List for the MBS708CS
Transmission Assembly**

Index No.	Part No.	Description	Size	Qty.
50	MBS708CS-50	Washer	M5	2
51	MBS708CS-51	Hex. Nut	M10XP1	4
52	MBS708CS-52	Spring Washer	M10	4
53	MBS708CS-53	Deflector Plate		1
54	MBS708CS-54	Blade Adjustable (Rear)		1
56	MBS708CS-56	Hex. Socket Head Screw	M8X35L	2
57	TS-1550051	Washer	M8	2
58S	MBS708CS-58S	Brush Assembly		1
58-1	MBS708CS-58-1	Brush Support		1
58-2	MBS708CS-58-2	Brush		1
58-3	MBS708CS-58-3	Bushing		1
58-5	MBS708CS-58-5	Hex. Socket Headless Screw	M6X10L	1
58-6	MBS708CS-58-6	Bushing		1
61	MBS708CS-61	Cover		1
62	MBS708CS-62	Hex. Socket Head Screw	M8X15L	2
64	MBS708CS-64	Hex. Socket Headless Screw	M8X15L	1
65	MBS708CS-65	Frame Pivot Shaft		1
66	MBS708CS-66	Washer	M8	2
67	MBS708CS-67	Tapered Bearing		2
69	MBS708CS-69	Anti-Chip Cover		2
70	MBS708CS-70	Privet Shaft Washer		2
71	MBS708CS-71	Motor	1PH/400/50HZ/3HP	1
72	MBS708CS-72	Hex. Socket Head Screw	M6X20L	4
73	MBS708CS-73	Spring Washer	M6	4
74S	MBS708CS-74S	Gear Box		1
75	MBS708CS-75	Spring Washer	M8	4
76	MBS708CS-76	Hex. Socket Head Screw	M8X25L	4
77	MBS708CS-77	PU Tube	ø6X800L	1
78	MBS708CS-78	Hose Fitting	ø8X1/4"PT	1
79	MBS708CS-79	Hex. Socket Head Screw	M6X15L	2
80	MBS708CS-80	3 Way Valve		1
81	MBS708CS-81	PU Tube	ø6X240L	1
82	MBS708CS-82	Valve	1/8"	2
82A	MBS708CS-82A	Handle		2
83	MBS708CS-83	Hose Fitting	ø6X1/8"PT	4
84	MBS708CS-84	Bushing		1
85	MBS708CS-85	Hex. Socket Head Screw	M10X25L	1
86	MBS708CS-86	Washer		1
87	MBS708CS-87	Round Head Key	8X7X50	1
88	MBS708CS-88	Output Shaft		1
89	MBS708CS-89	Round Head Key	7X7X30	1
90	MBS708CS-90	Bearing		1
91	MBS708CS-91	Spring		1
92	MBS708CS-92	Spring		1
96	MBS708CS-96	Idler Wheel		1
99	MBS708CS-99	Nut	M20XP1	1
100	MBS708CS-100	Blade	208.5X20X0.9X5/8T	1
101	MBS708CS-101	Drive Wheel		1
102	MBS708CS-102	Drive Shaft Washer		1
103	MBS708CS-103	Hex. Head Screw	M10X25L	1
104	MBS708CS-104	Blade Back Cover		1

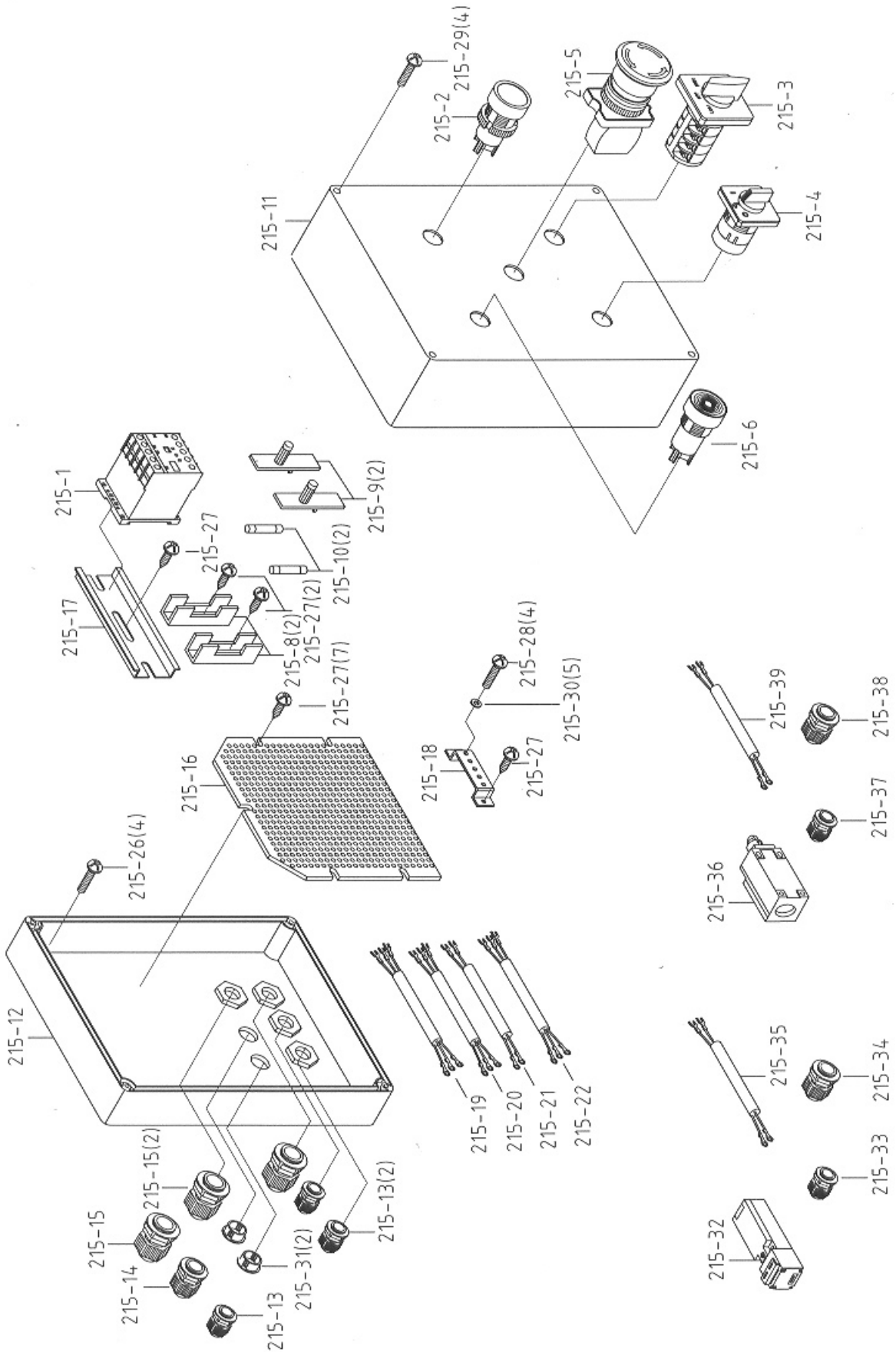
**Parts List for the MBS708CS
Transmission Assembly**

Index No.	Part No.	Description	Size	Qty.
105	MBS708CS-105	Hex. Socket Head Screw	M6X15L	4
106	MBS708CS-106	Washer	M6	4
111	MBS708CS-111	Round Head Screw	M5X15L	2
112	MBS708CS-112	Washer	M5	2
113	MBS708CS-113	Washer	M5	1
114	MBS708CS-114	Round Head Screw	M5X12L	1
161	MBS708CS-161	Scale		1
162	MBS708CS-162	Rivet	ø2X6	2
165	MBS708CS-165	Distance Set Rod Assembly		1
165-1	MBS708CS-165-1	Stop Block		1
165-2	MBS708CS-165-2	Washer	M8	2
165-3	MBS708CS-165-3	Knob		2
165-4	MBS708CS-165-4	Stock Stop Rod		1
165-5	MBS708CS-165-5	Distance Set Rod		1
165-6	MBS708CS-165-6	Hex. Nut	M14XP1.5	1
165-7	MBS708CS-165-7	Scale		1
165-8	MBS708CS-165-8	Rivet	ø2	4
170	MBS708CS-170	Hand wheel		1
171	MBS708CS-171	Pin	ø5X35	1
172	MBS708CS-172	Bearing Cover		1
173	MBS708CS-173	Bearing	ø30Xø47X3.5	1
174	MBS708CS-174	Vise Handle		1
175	MBS708CS-175	Spring		1
176	MBS708CS-176	Bushing		1
178	MBS708CS-178	Washer		1
179	MBS708CS-179	Hex. Socket Head Screw	M6X15L	1
180	MBS708CS-180	Vise Jaw Bracket		1
181	MBS708CS-181	Vise		1
182	MBS708CS-182	Hex. Socket Flat Head Screw	M6X12L	2
186	MBS708CS-186	Vise Jaw Bracket		1
190	MBS708CS-190	Lead screw A		1
191	MBS708CS-191	Hex. Socket Headless Screw	M8X20L	1
193	MBS708CS-193	Hex. Socket Head Screw	M6X100L	2
194	MBS708CS-194	Swivel Arm		1
195	MBS708CS-195	Hex. Nut	M10	2
196	MBS708CS-196	Vise Jaw Adjustable Rod		1
197	MBS708CS-197	O-Retainer Ring	ø19.8X ø2.4	1
198	MBS708CS-198	Hex. Head Screw	M10X45L	2
200	MBS708CS-200	Bushing		1
201	MBS708CS-201	Nut		1
202	MBS708CS-202	Bolt		1
203	MBS708CS-203	Cylinder Assembly		1
204	MBS708CS-204	Washer	M12	2
205	MBS708CS-205	Hex. Socket Head Screw	M12X80L	1
207	MBS708CS-207	Hex. Socket Headless Screw	M6X15L	2
208	MBS708CS-208	Hex. Nut	M12XP1.75	1
210	MBS708CS-210	Cylinder Cover		1
214	MBS708CS-214	Liable for Name Plate		1
215	MBS708CS-215	Control Box Assembly		1
216	MBS708CS-216	Hex Socket Plug	3/8" PT	1
216-1	MBS708CS-216-1	O-Retainer Ring	P14	1

**Parts List for the MBS708CS
Transmission Assembly**

Index No.	Part No.	Description	Size	Qty.
218	MBS708CS-218	O-Retainer Ring	ID170X5.7W	1
219	MBS708CS-219	Spring Washer	M10	6
220	MBS708CS-220	Hex. Socket Head Screw	M10X20L	6
221	MBS708CS-221	Stand		1
221-1	MBS708CS-221-1	Swivel Arm Base		1
222	MBS708CS-222	Filter		1
223	MBS708CS-223	Cross Round Head Screw	M4X8L	2
224	MBS708CS-224	Hex. Head Screw	M10X50L	1
224-1	MBS708CS-224-1	Hex. Head Screw	M10X100L	1
225	MBS708CS-225	Hex. Nut	M10	2
227	MBS708CS-227	Hex. Head Screw	M10X25L	2
228	MBS708CS-228	Spring Washer	M10	2
229	MBS708CS-229	Fixed Plate		1
230	MBS708CS-230	Round Head Screw	M6X10L	2
231	MBS708CS-231	Hex. Socket Head Screw	M10X35L	1
232	MBS708CS-232	Nut		1
233	MBS708CS-233	Adjustable Handle		1
234	TS-1550071	Washer	M10	4
235	MBS708CS-235	Hex. Socket Head Screw	M10X20L	4
240	MBS708CS-240	Pump	1/8HP/400V/50HZ	1
241	MBS708CS-241	Cross Round Head Screw	M6X15L	2
242	MBS708CS-242	Spring Washer	M6	2
243	MBS708CS-243	Micro Control Block	3/8" X3/8"	1
245	MBS708CS-245	PU Tube	ø8X1300L	1
248	MBS708CS-248	Fluid Collected Plate		1
249	MBS708CS-249	Feed Support		1
250	MBS708CS-250	Stand Leg Set		1
250-1	MBS708CS-250-1	Stand Leg (front)		2
250-2	MBS708CS-250-2	Stand Leg(Right)(Left)		2
253	TS-1490031	Hex. Head Screw	M8X20L	12
254	TS-1550051	Washer	M8	24
255	MBS708CS-255	Hex. Nut	M8	12
258	MBS708CS-258	Bracket		1
259	MBS708CS-259	Washer	M5	2
260	MBS708CS-260	Hex. Socket Head Screw	M5X10L	2
282	MBS708CS-282	Knob		1
283	MBS708CS-283	Hex. Socket Head Screw	M8X15L	2
284	MBS708CS-284	Hex. Nut	M8	2
285	MBS708CS-285	Spring Washer	M8	2
292	MBS708CS-292	Hex. Nut	M10	2
293	MBS708CS-293	Hex. Socket Head Screw	M10X40L	1
294	MBS708CS-294	Control Box Base		1
295	MBS708CS-292	Hex. Head Screw	M8X20L	2
296	MBS708CS-296	Washer	M8	2
297	MBS708CS-297	Cylinder Bracket		1
297-1	MBS708CS-297-1	Plate		1
297-2	MBS708CS-297-2	Hex. Socket Head Screw	M5X10	1
304	MBS708CS-304	Hex. Socket Head Screw	M6X15L	2
305	MBS708CS-305	Spring Washer	M6	2
306	TS-1550041	Washer	M6	2
307	MBS708CS-307	Hex. Nut	M6	2

Breakdown for the MBS708CS Electrical Box Assembly



**Parts List for the MBS708CS
Electrical Box Assembly**

Index No.	Part No.	Description	Size	Qty.
215	MBS708CS-215	Control Box		1
215-1	MBS708CS-215-1	Magnetic-Contact		1
215-2	MBS708CS-215-2	Push-Button Switch		1
215-3	MBS708CS-215-3	Choice Pole Switch		1
215-4	MBS708CS-215-4	Choice-Switch		1
215-5	MBS708CS-215-5	Emergency-Stop Switch		1
215-6	MBS708CS-215-6	Lamp		1
215-8	MBS708CS-215-8	Fuse-Base		2
215-9	MBS708CS-215-9	Fuse-Lid		2
215-10	MBS708CS-215-10	Fuse		2
215-11	MBS708CS-215-11	Box Upper Lib		1
215-12	MBS708CS-215-12	Box Seat		1
215-13	MBS708CS-215-13	Cable-Gland		3
215-14	MBS708CS-215-14	Cable-Gland		1
215-15	MBS708CS-215-15	Cable-Gland		3
215-16	MBS708CS-215-16	Net-Pin		1
215-17	MBS708CS-215-17	Din-Rails		1
215-18	MBS708CS-215-18	Grand Copper Pin		1
215-19	MBS708CS-215-19	Power Cable		1
215-20	MBS708CS-215-20	Motor Cable		1
215-21	MBS708CS-215-21	Limit Cable		1
215-22	MBS708CS-215-22	Pump Cable		1
215-23	MBS708CS-215-23	Wire		1
215-24	MBS708CS-215-24	Wire		1
215-25	MBS708CS-215-25	Wire		1
215-26	MBS708CS-215-26	Cross Round Head Screw	M5x8	4
215-27	MBS708CS-215-27	Screw	M4x8	11
215-28	MBS708CS-215-28	Screw	M4x6	4
215-29	MBS708CS-215-29	Cross Round Head Screw	M4x15	4
215-30	MBS708CS-215-30	Washer	M5	5
215-31	MBS708CS-215-31	Hole Plug		2
215-32	MBS708CS-215-32	Limit-Switch		1
215-33	MBS708CS-215-33	Cable-Gland		1
215-34	MBS708CS-215-34	Cable-Gland		1
215-35	MBS708CS-215-35	Limit Cable		1
215-36	MBS708CS-215-36	Limit-Switch		1
215-37	MBS708CS-215-37	Cable-Gland		1
215-38	MBS708CS-215-38	Cable-Gland		1
215-39	MBS708CS-215-39	Limit Cable		1

MBS708CS 50000331T

	colour of strands	Litzenfarben	couleur des cordons
BK	black	schwarz	noir
WH	white	weiß	blanc
BU	blue	blau	bleu
RD	red	rot	rouge
BN	brown	braun	brun
GNYE	green-yellow	grün-gelb	vert-jaune
GN	green	grün	vert

	meaning of symbol	Bedeutung der Zeichen	interprétation								
KM	Magnetic contactor	Hauptschütz	contacteur								
FU	fuse	Sicherung	fusible								
L	lamp	Anzeigenlampe	lampe d'indication								
SE	emergency stop switch	Not-Aus Schalter	arrêt d'urgence								
SB1	start button	Ein-Schalter	bouton marche								
SC1	choice speed switch	Aus-Schalter	bouton arrêt								
SC2	pump switch	Kühlmittel-Schalter	bouton pompe								
SQ1	downer limit switch	Positionsendschalter	micro								
M	main motor	Hauptmotor	moteur principal								
P	pump	Kühlmittelmotor	moteur pompe	SQA	saw lid limit switch	Positionsendschalter	micro	SQB	tension limit switch	Positionsendschalter	micro
SQA	saw lid limit switch	Positionsendschalter	micro								
SQB	tension limit switch	Positionsendschalter	micro								

400/50/3

